



COMPANY PROFILE



2023



VISION

To be an African engineering powerhouse that will serve to be a world class engineering enterprise with precise focus on quality and service delivery

MISSION

Help all our clients meet their engineering objectives through efficient high quality products and services.

VALUES

integrity: 'To do what is right even when nobody is looking.
' We strive to be 110% honest, truthful and consistent with our moral and ethical principles at every level of our work.

Quality: High quality products and services is at the pinnacle of our organization and we accept nothing less than the best.

Excellence: We strive to ensure that all our stakeholders experience a high level of excellence through our engagements



NYABANGA ENGINEERING MANAGEMENT TEAM

Nyabanga Engineering is led by different leaders with various sets of expertise, bringing together years of knowledge and experience to build a resilient organisation.

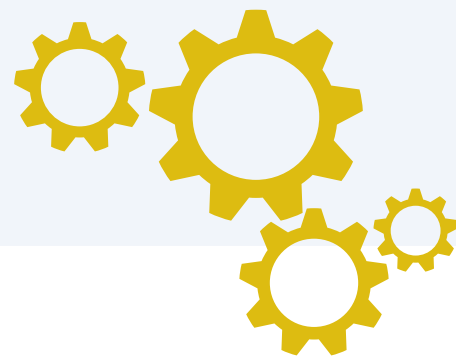
- **MARCOS NYABANGA** - FOUNDER AND CEO
072 337 6660
- **JUNIOR NYABANGA** - DIRECTOR
064 774 4730
- **JORGE MANJATE** - FOREMAN
082 424 8629
- **CHARMAINE STRAUS** - HEAD SECRETARY
076 036 2436

CONTACT

Mail: info@nyabanga.co.za

Tel: 011 420 1537

Add: Plot 35, Pretoria RD, Fairleads, Petit, Benoni



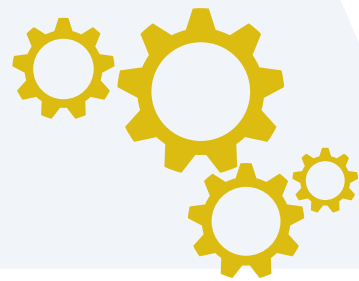


PROVIDING QUALITY ENGINEERING SOLUTIONS

OUR PRODUCTS & SERVICES:

Nyabanga Engineering is a well-established engineering powerhouse with over 30 years of collective experience. We cover a broad range of engineering solutions and business functions giving us the confident capability of achieving customer satisfaction.

- **Axles**
- **Pumps**
- **Torque Converters**
- **Transmissions**
- **Drive Train Components**
- **Gearboxes**
- **Hydraulic Cylinders**
- **Transformers**
- **Motors**
- **Wheel Motors**
- **Hydraulic pumps**
- **Drifters**
- **Flotation Cells**
- **General Engineering and CNC Manufacturing**





DRIVE TRAIN

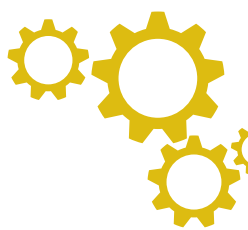
We repair and supply new axles, transmissions and torque converters to a wide range of markets for a variety of uses – agriculture, construction, cranes, material handling, mining, harbor equipment, marine applications, lift trucks, aircraft ground support, agriculture, telehandlers, heavy trucks and special vehicles.

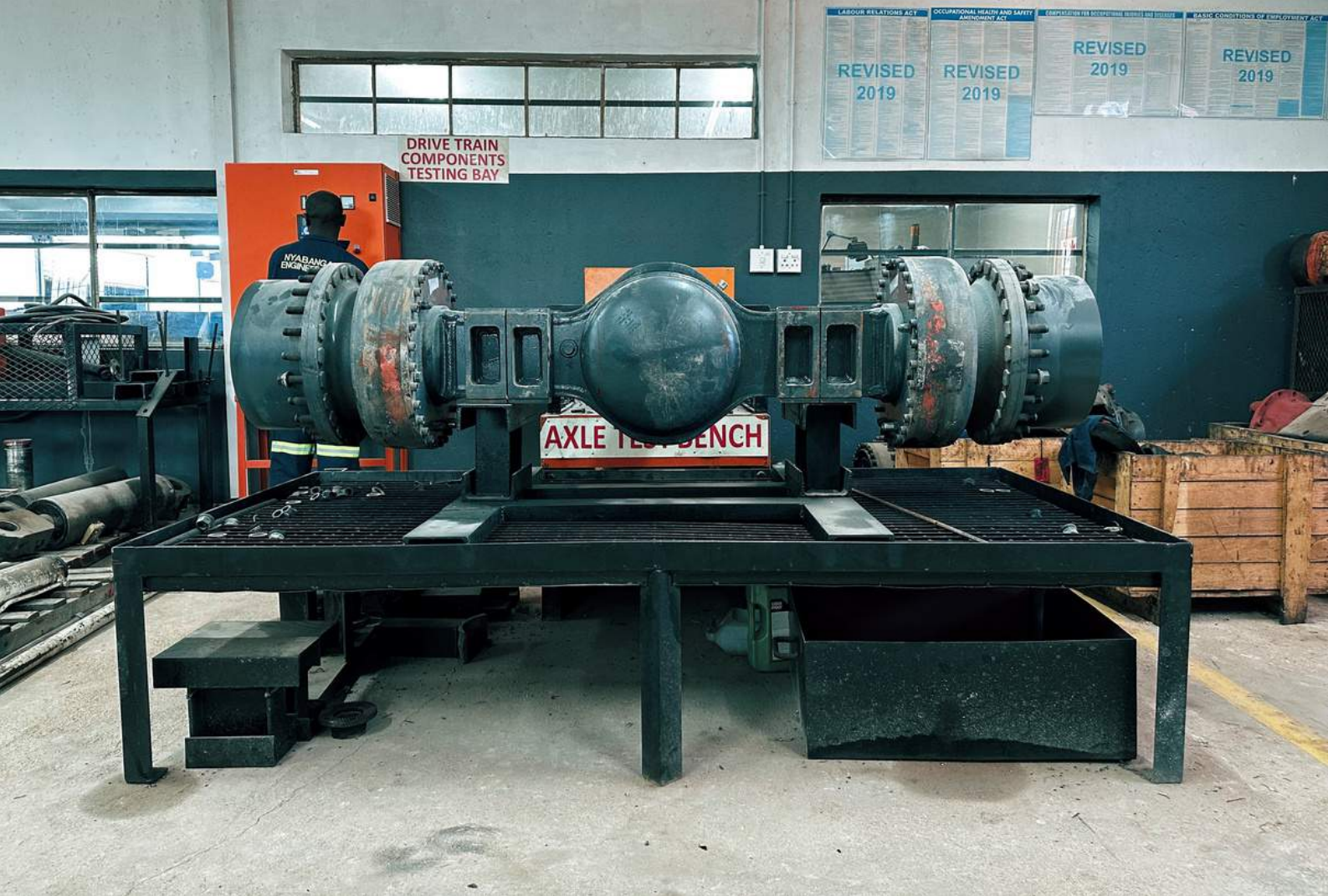
Spares and Service Exchange Parts

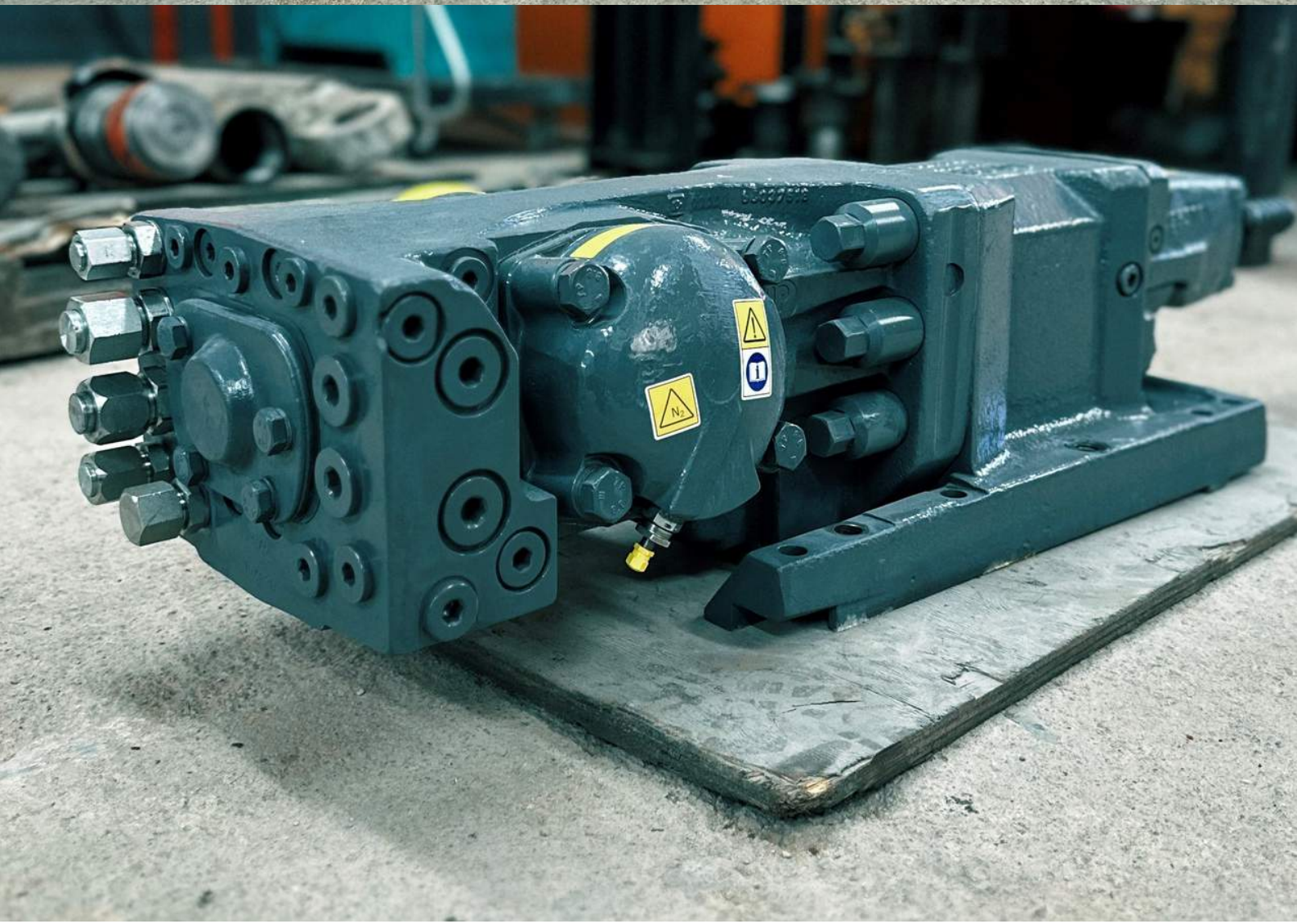
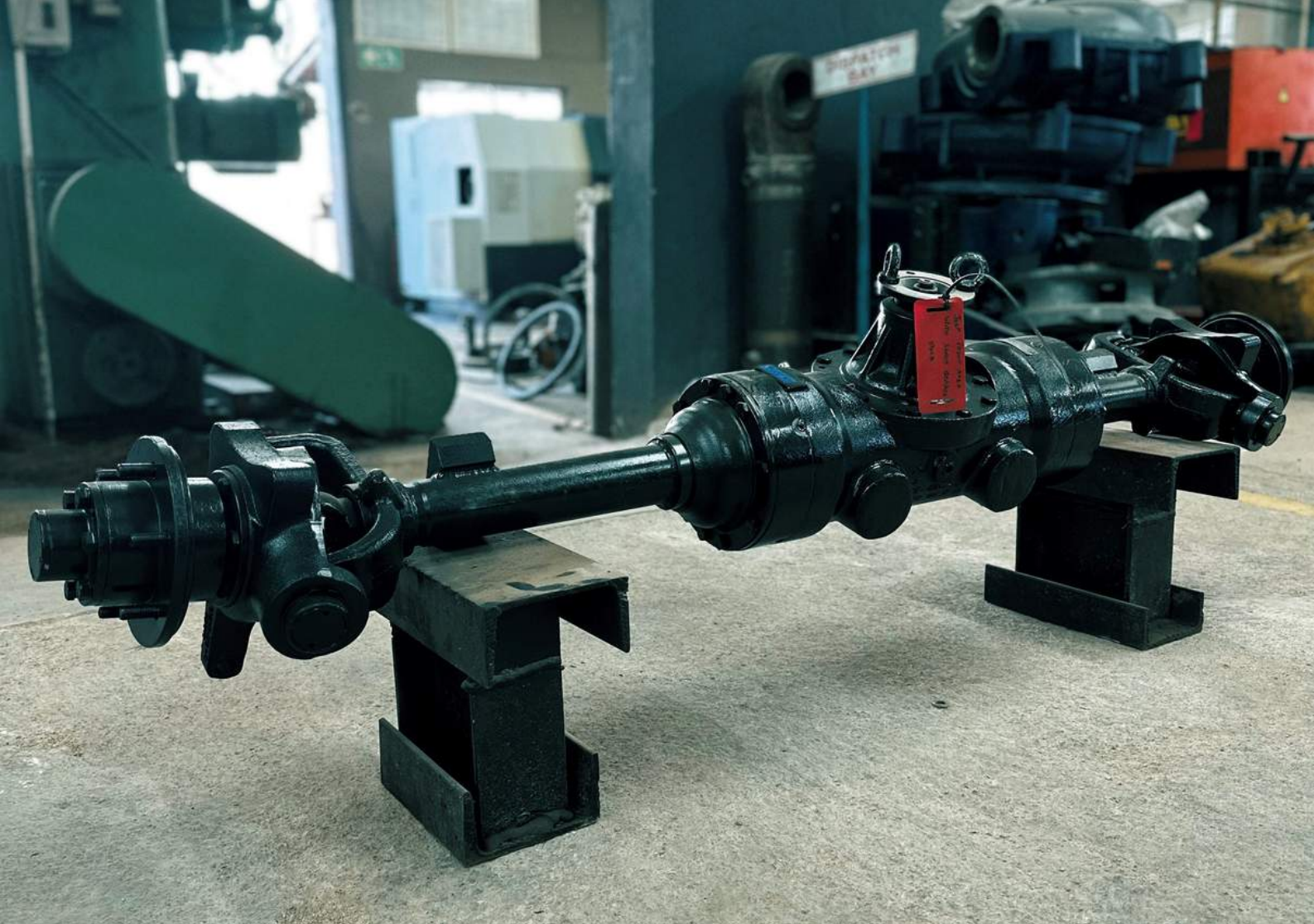
We also carry a substantial quantity of spares and also offer a large range of service exchange stock to reduce production time losses through component failures on site.

Drifters

To strengthen our offering, we recently added a capability to service and repair drifters.











HYDRAULIC CYLINDERS

We design, manufacture, refurbish and repair a range of hydraulic cylinders for customers predominately in mining as well as other industries.

Machining

All components are machined according to international ISO tolerance tables. Workshop personnel have individual sets of measuring equipment that are calibrated regularly to meet the requirements of our ISO 9001:2015 accreditation and audited by Bureau Veritas Certification.

All cylinders are tested on a hydraulic test bench.

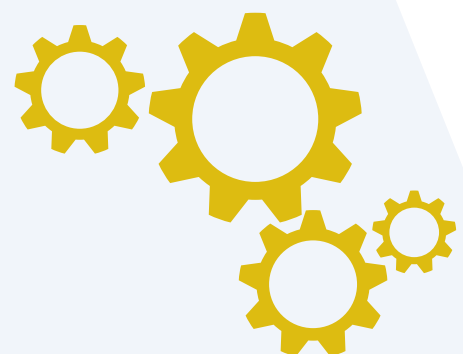


PUMPS

Nyabanga Engineering repairs and supplies all kinds of pumps including submersible pumps, water pumps, centrifugal pumps and vacuum pumps.

We supply and repair for well-known brands including Northam mines, Sibanye StillWater and Anglo-American.

We also provide various pump spares and keep stock of pumps in case of service exchange demands to meet our clients needs.





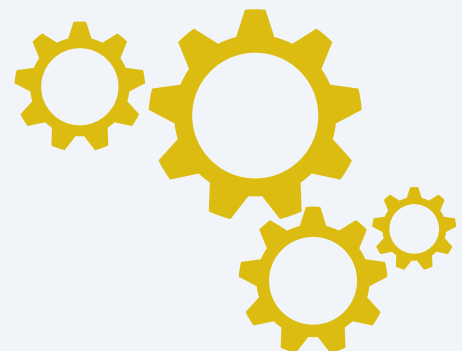


MOTORS

Product Range and Service Offerings.

Supply of large range of new motors .Refurbishing and Rewinding the following

- **AC Motors**
- **DC Motors**
- **Stator/Rotor Units**
- **Two Speed Motors**
- **Brake Motors**
- **Welding Machines**
- **Gearbox Motors**
- **Generators**
- **Transformers**
- **All types of Pump Motors**

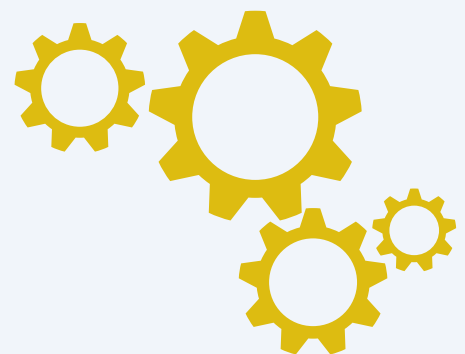






FLOTATION CELLS

We repair all kinds of flotation cells.

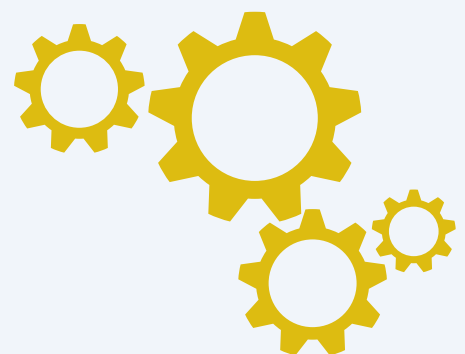






GENERAL MACHINING AND CNC MANUFACTURING

We are able to carry out general precision engineering tasks including producing CNC manufactured components.















Nyabanga Engineering is currently in the process of building a full factory that will consist of the following facilities: Machine Shop, Sandblasting Bay, Wash Bay, Stripping Bay, Assembly Bay, Test Bay, Inspection Bay

